



ROYAL LEPAGE



TRILAND REALTY
REAL ESTATE BROKERAGE



SOLD

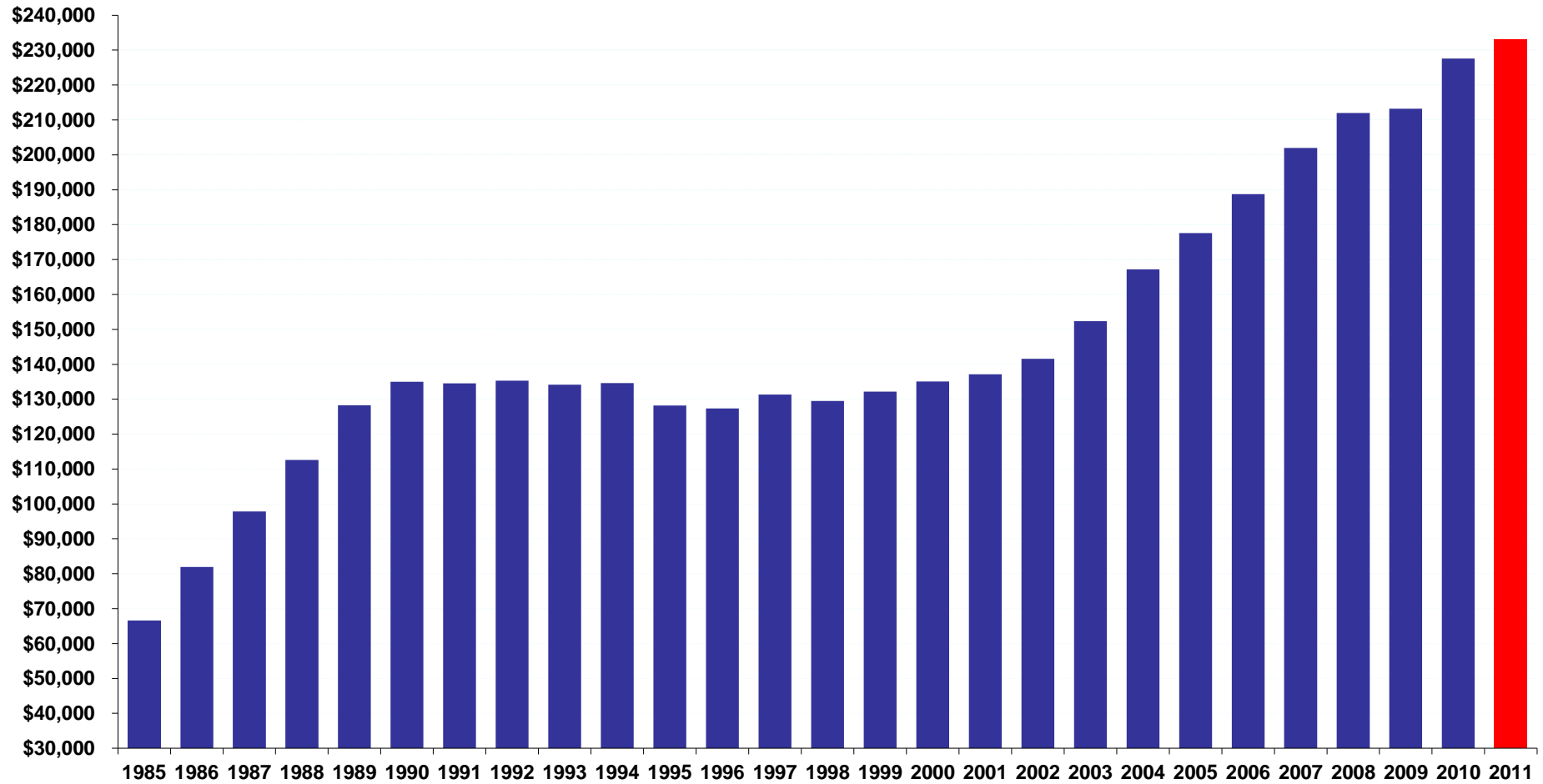
Market Charts

October 2011



Average Residential Price

(Detached and Condos)

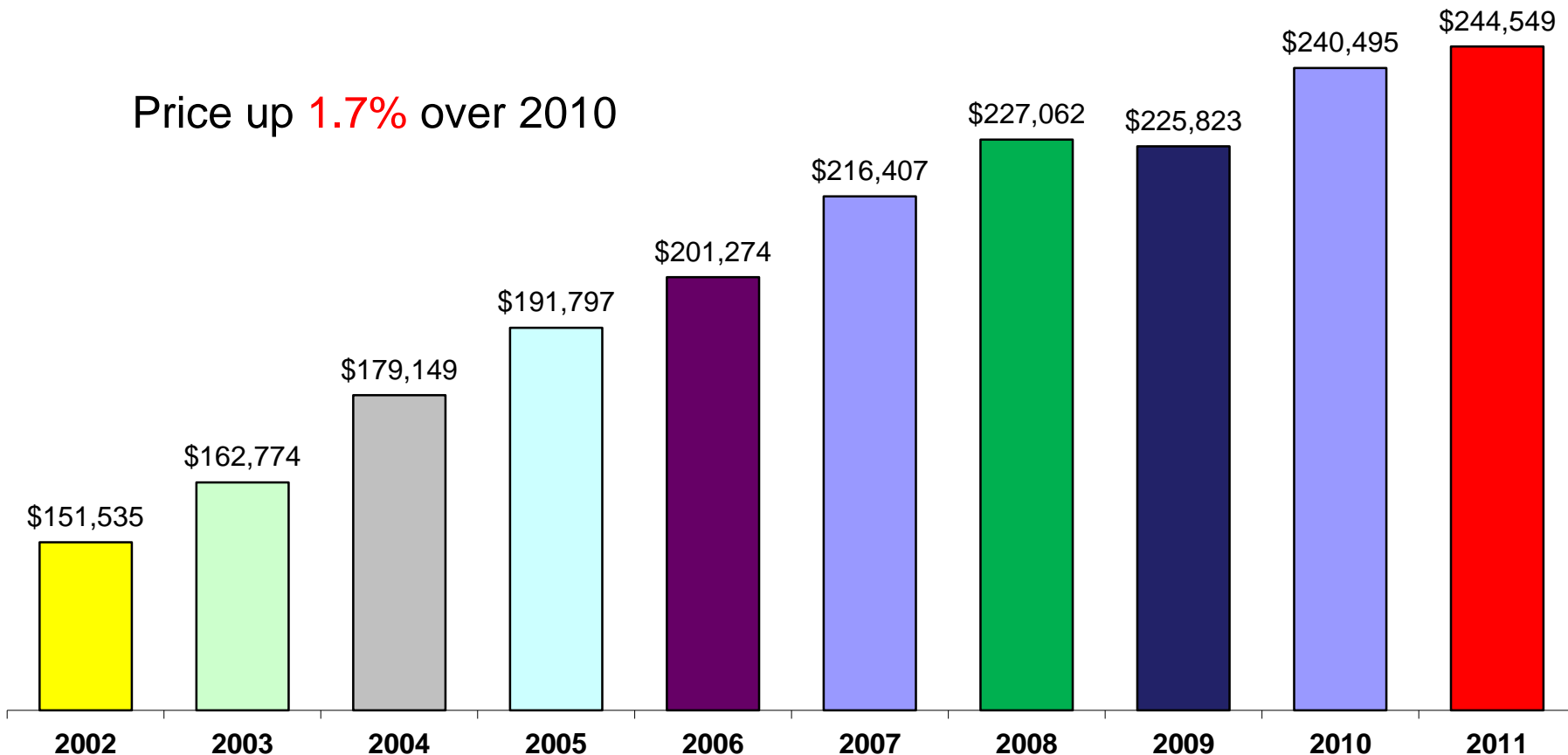


MLS Sales – London & St. Thomas Association of Realtors' Jurisdiction – YTD October 31

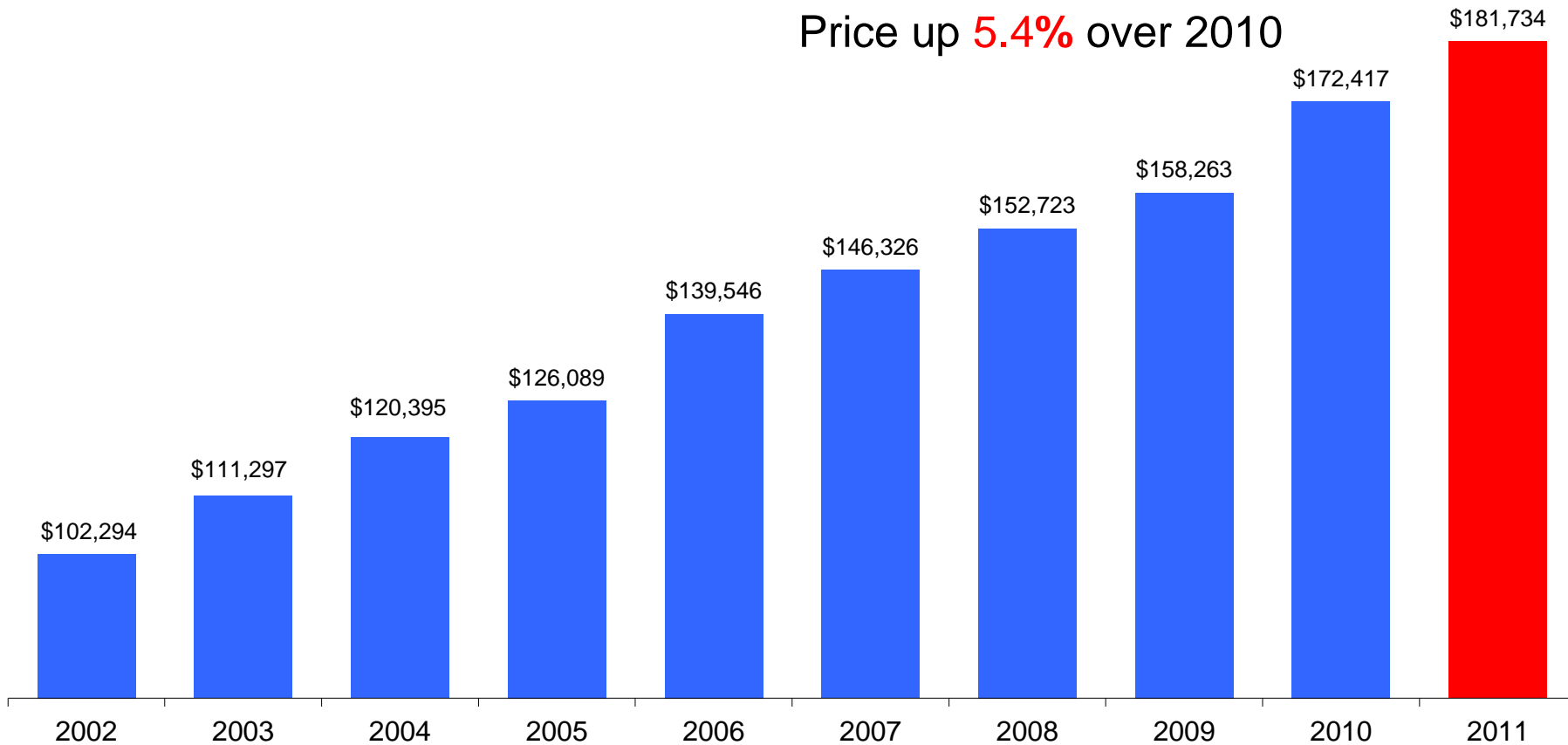
Average Residential Price (Excluding Condos)



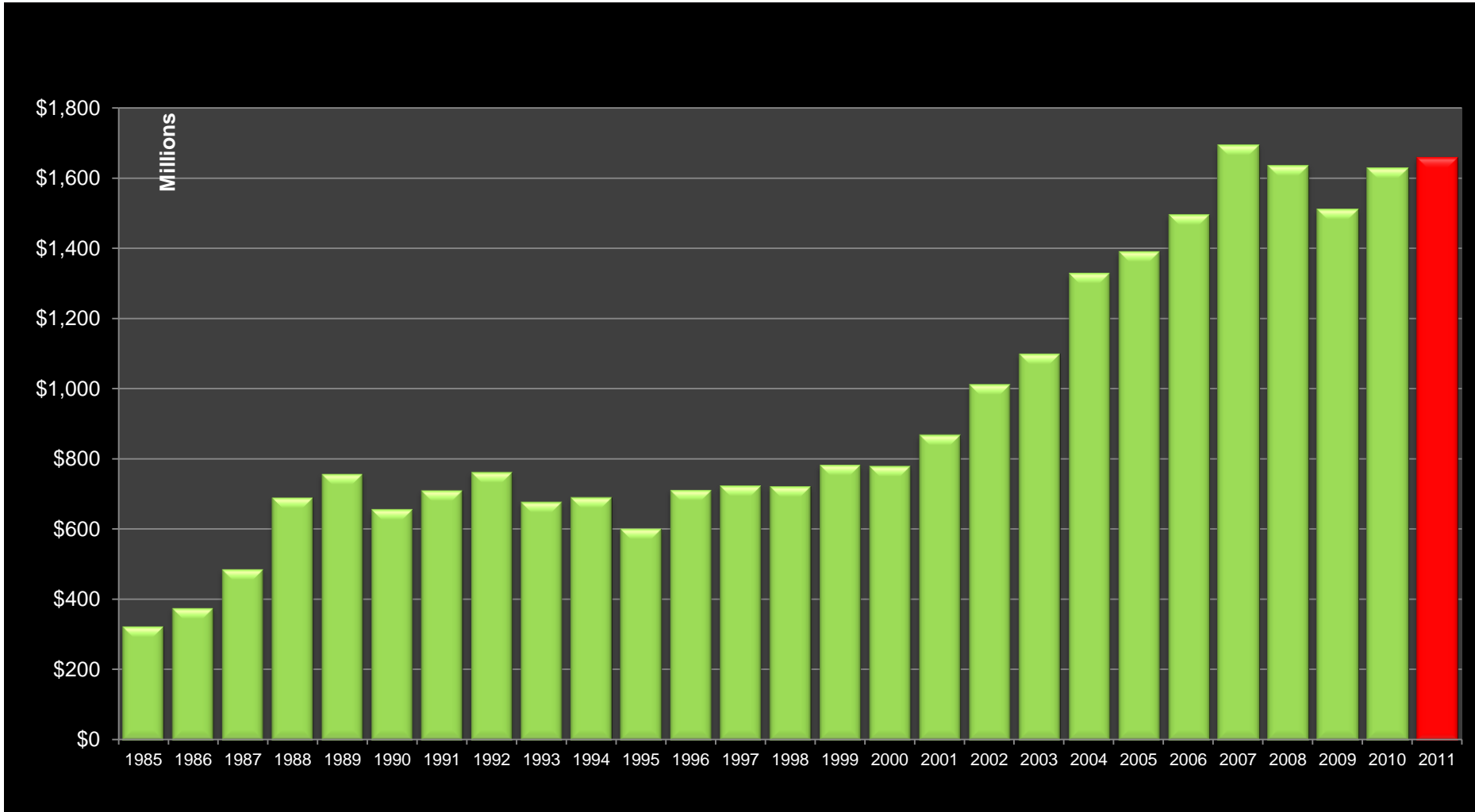
Price up **1.7%** over 2010



Average Condominium Price

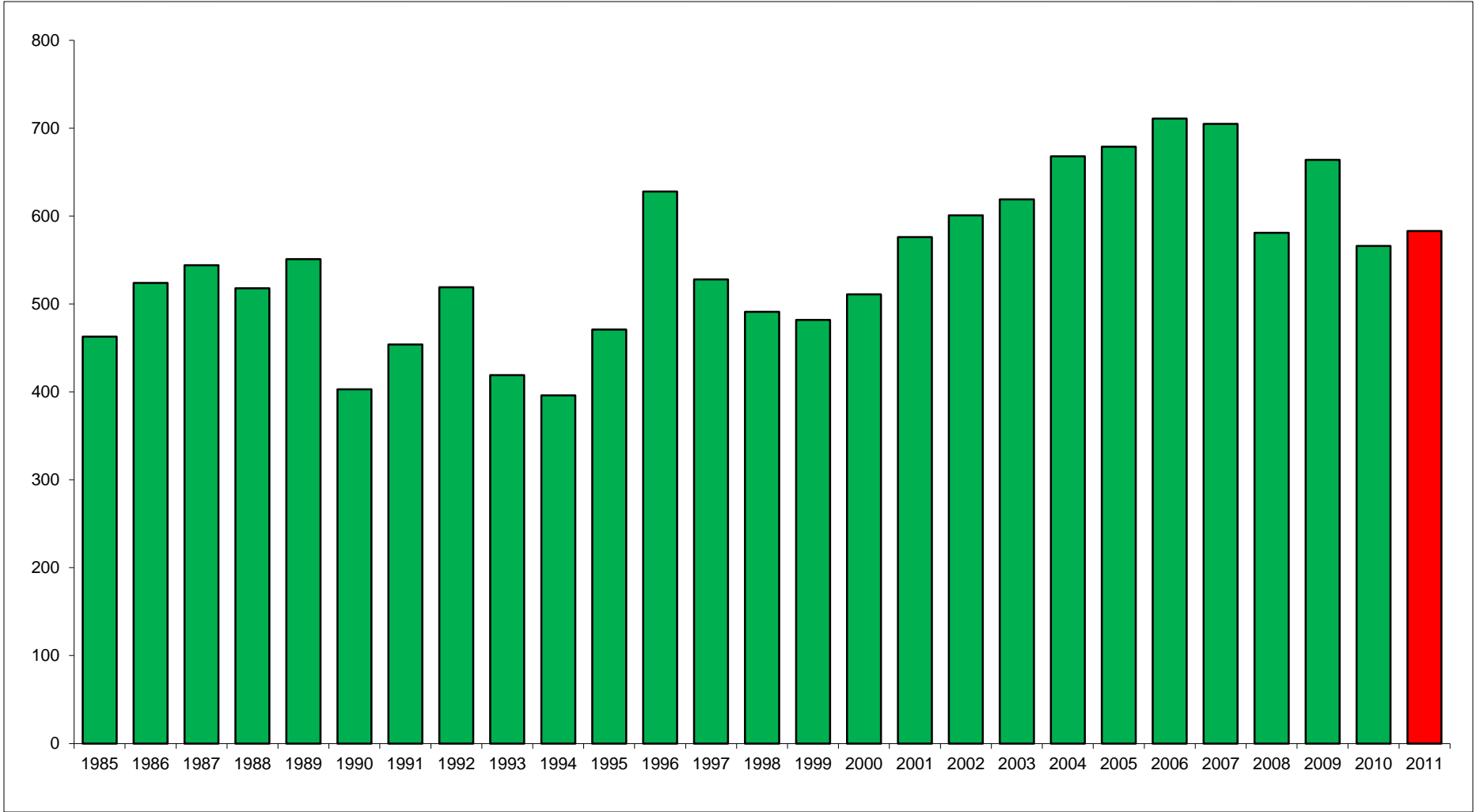


Dollar Volume of Residential Sales



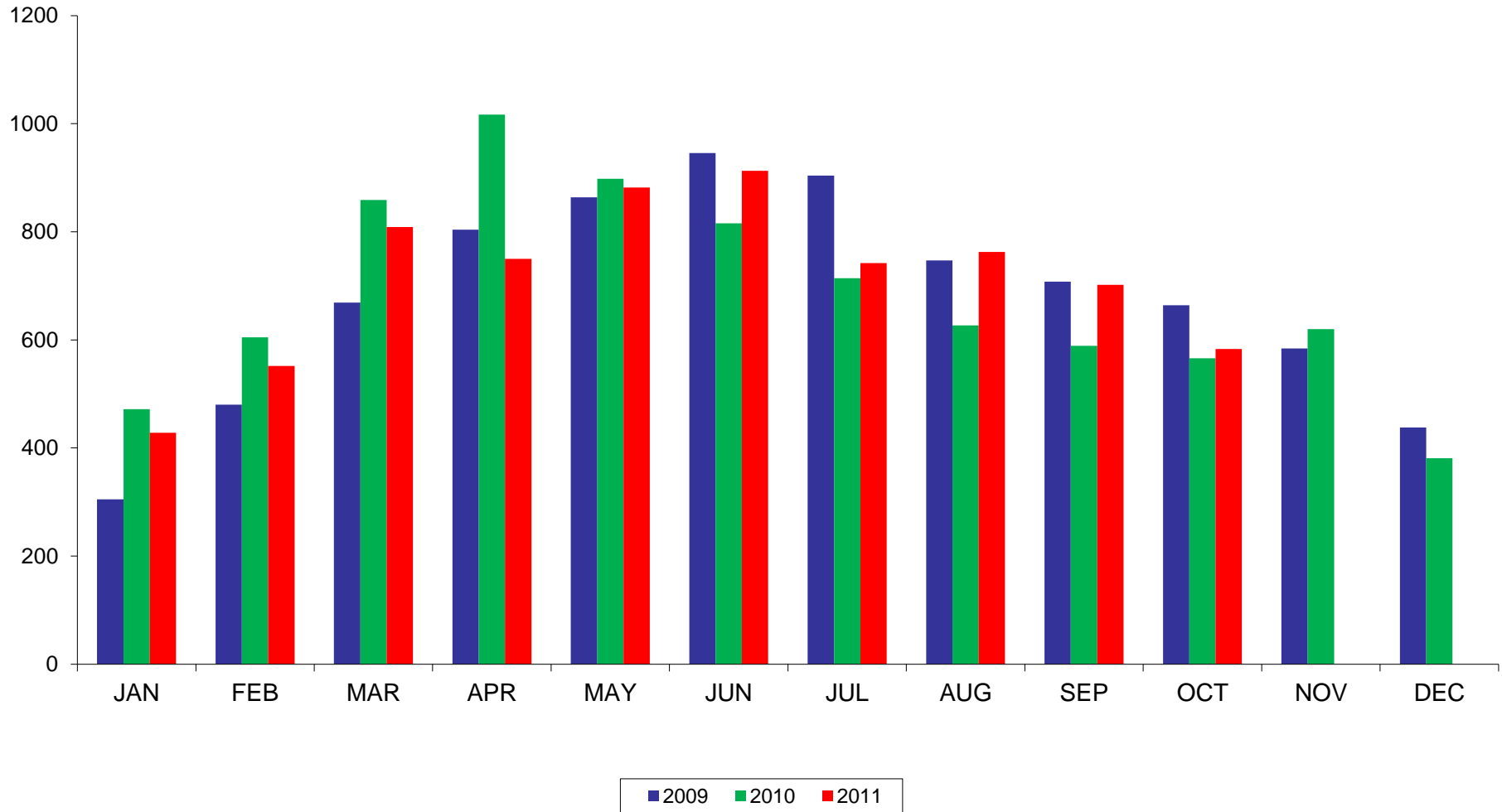
MLS Sales – London & St. Thomas Association of Realtors' Jurisdiction – YTD October 30

Number of Residential Sales in October



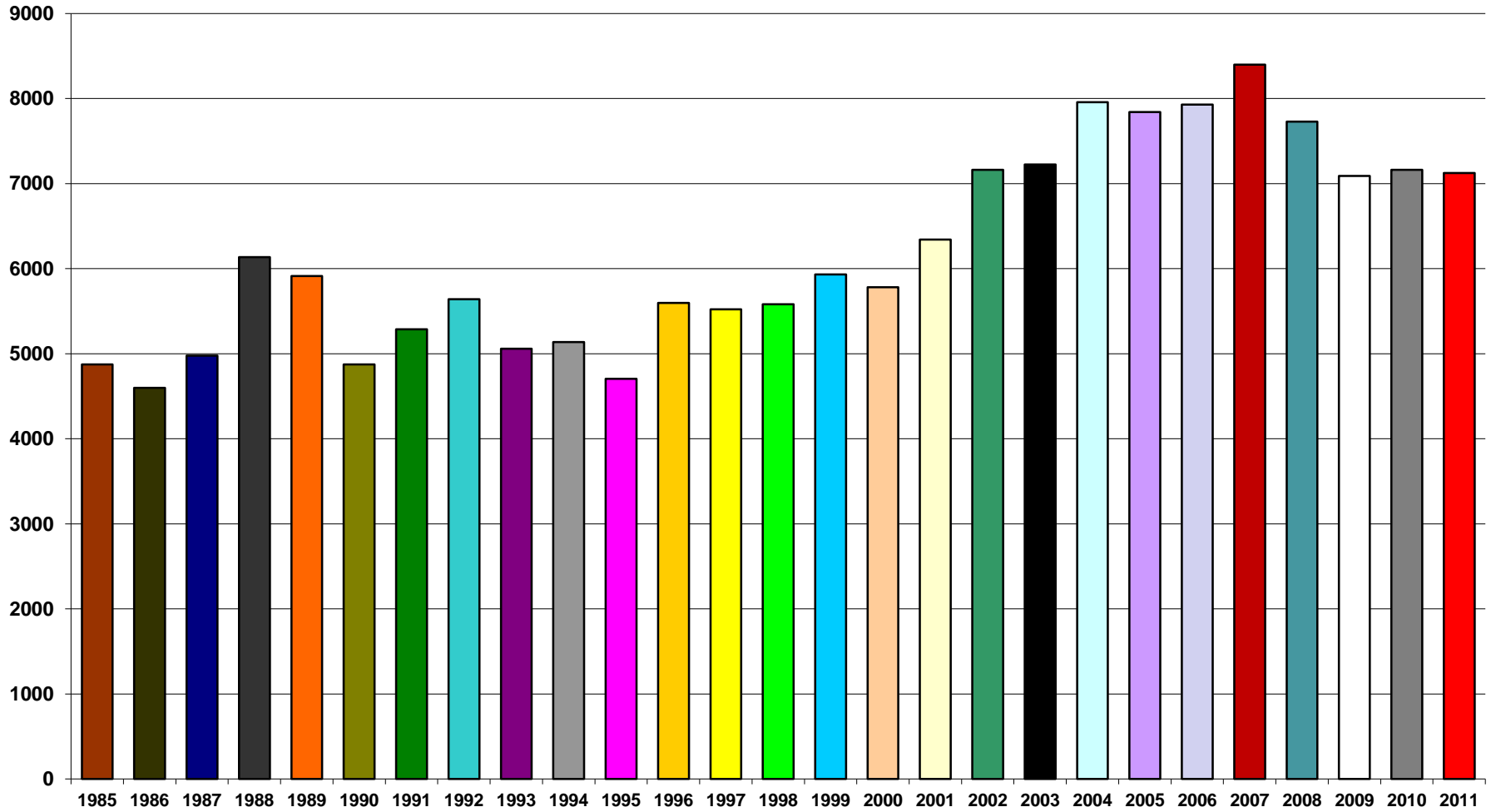
MLS Sales - London & St. Thomas Association of Realtors' Jurisdiction

Number of Residential Sales



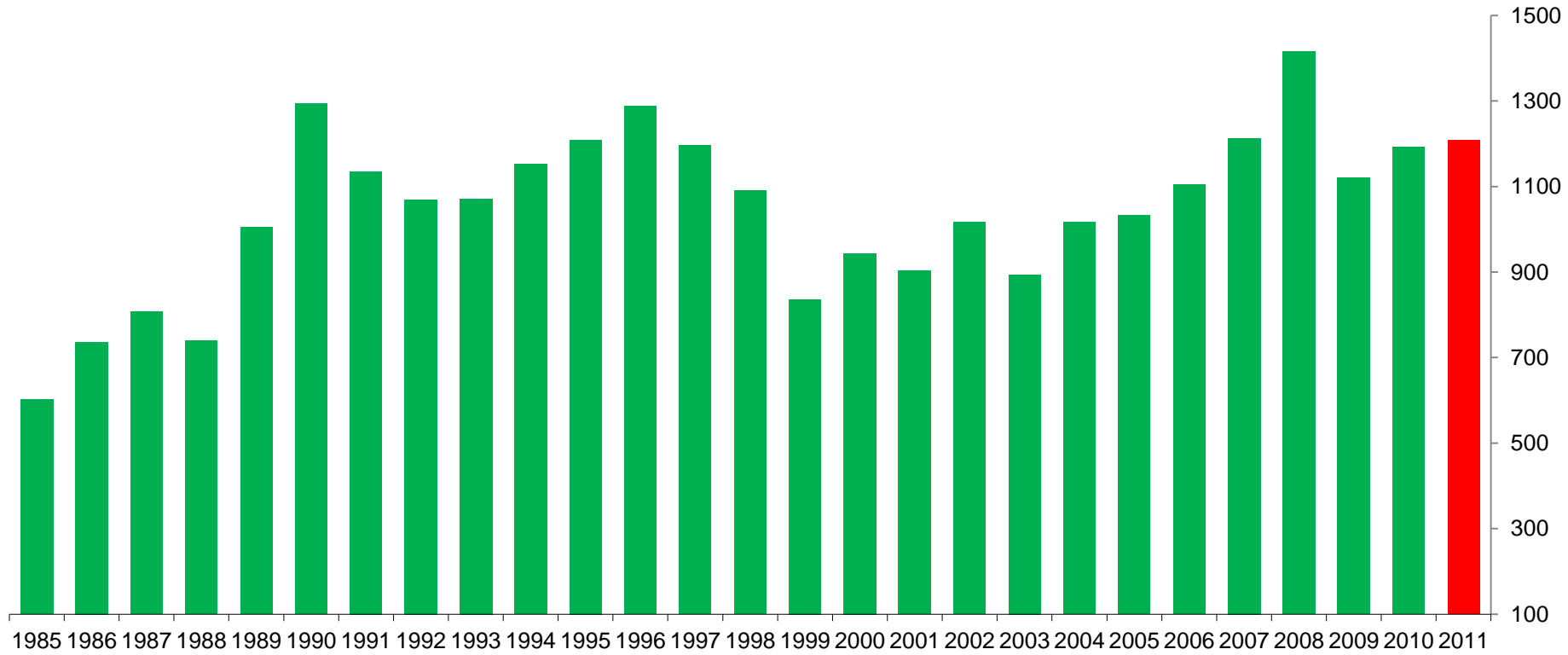
MLS Sales - London & St. Thomas Association of Realtors' Jurisdiction

Residential Sales YTD October 30



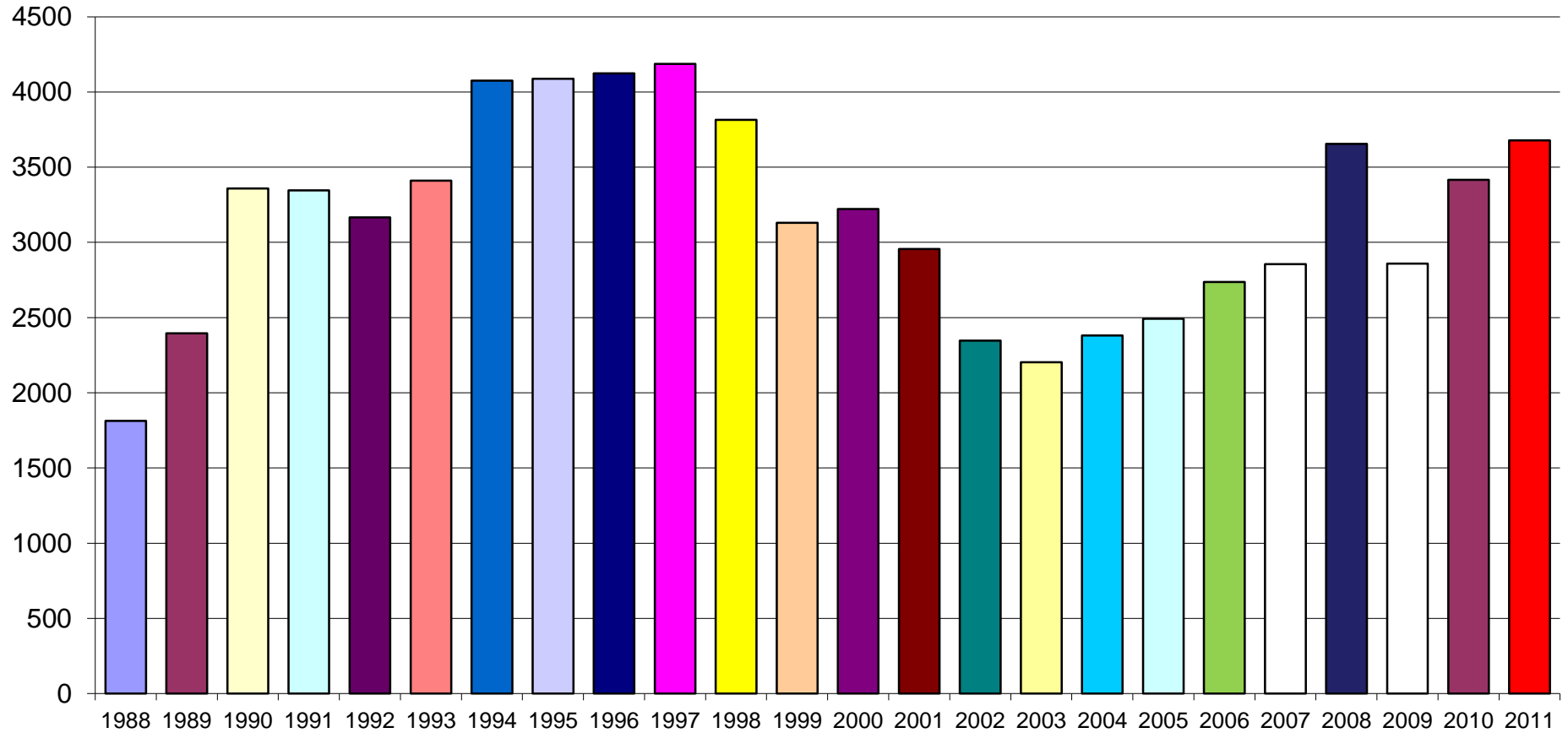
MLS Sales - London & St. Thomas Association of Realtors' Jurisdiction

New Residential Listings in October



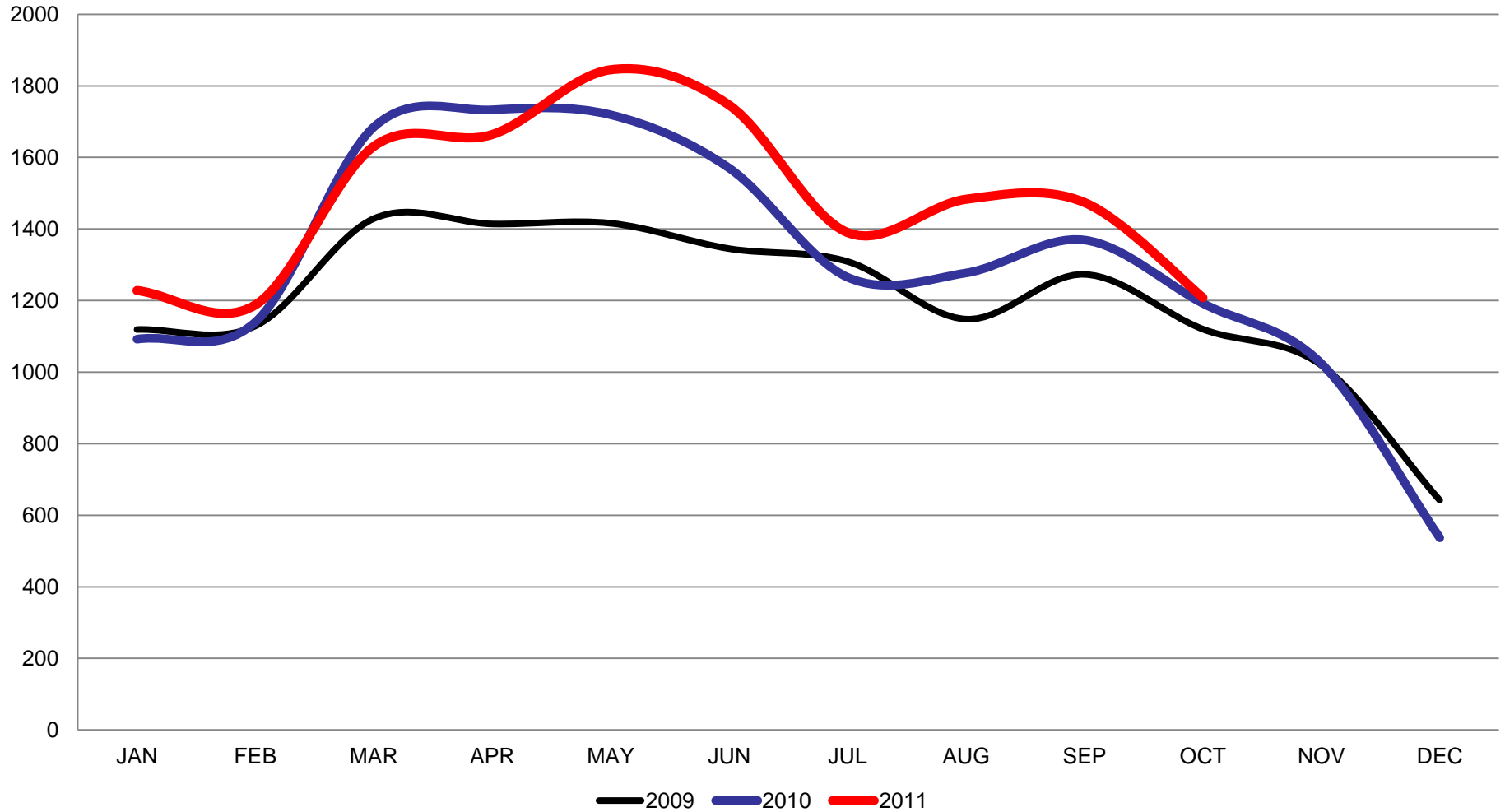
MLS Sales - London & St. Thomas Association of Realtors' Jurisdiction

Active Residential Listings



MLS Sales - London & St. Thomas Association of Realtors' Jurisdiction – at October 31

New Residential Listings

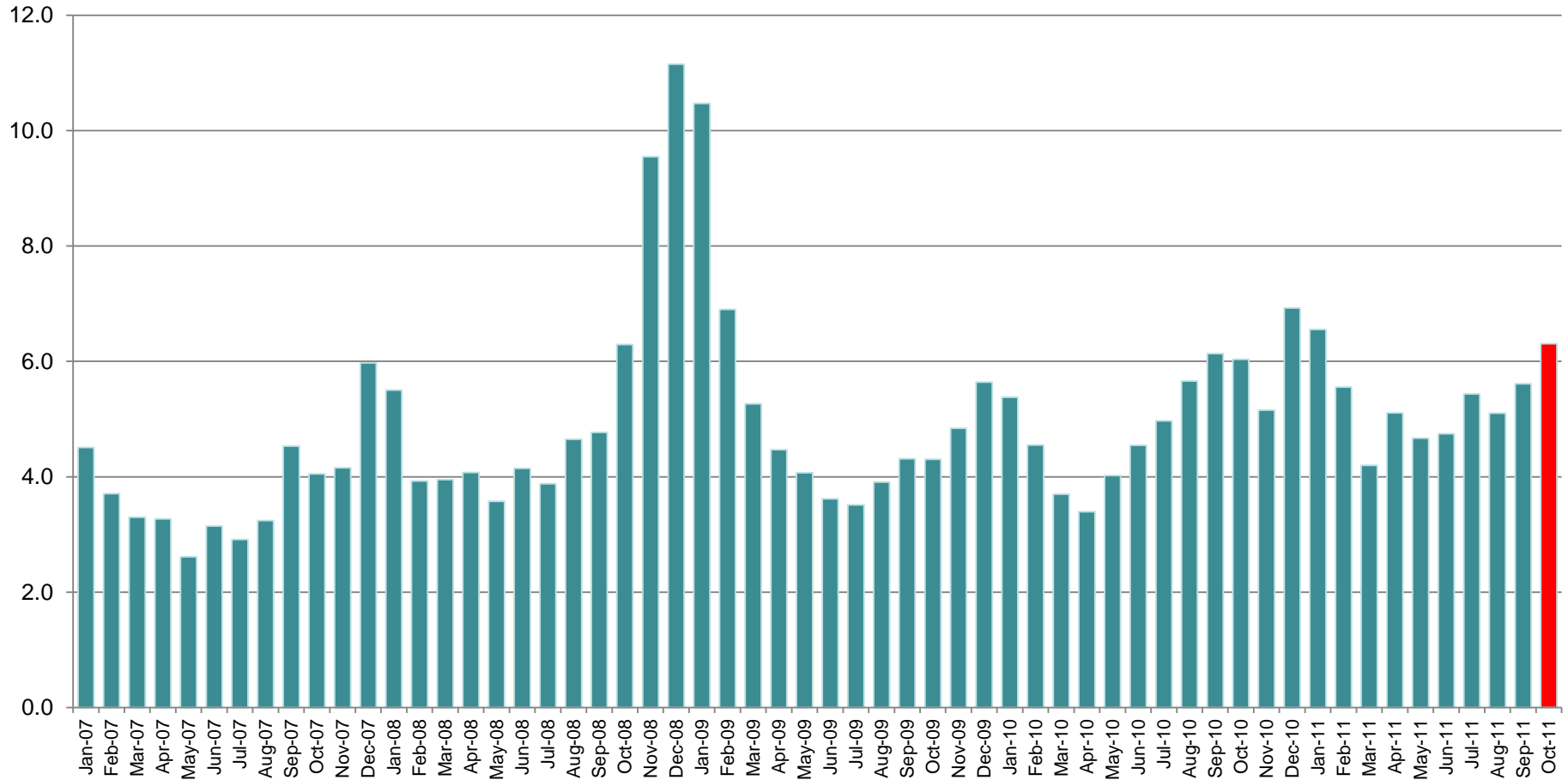


MLS Sales - London & St. Thomas Association of Realtors' Jurisdiction – at October 30

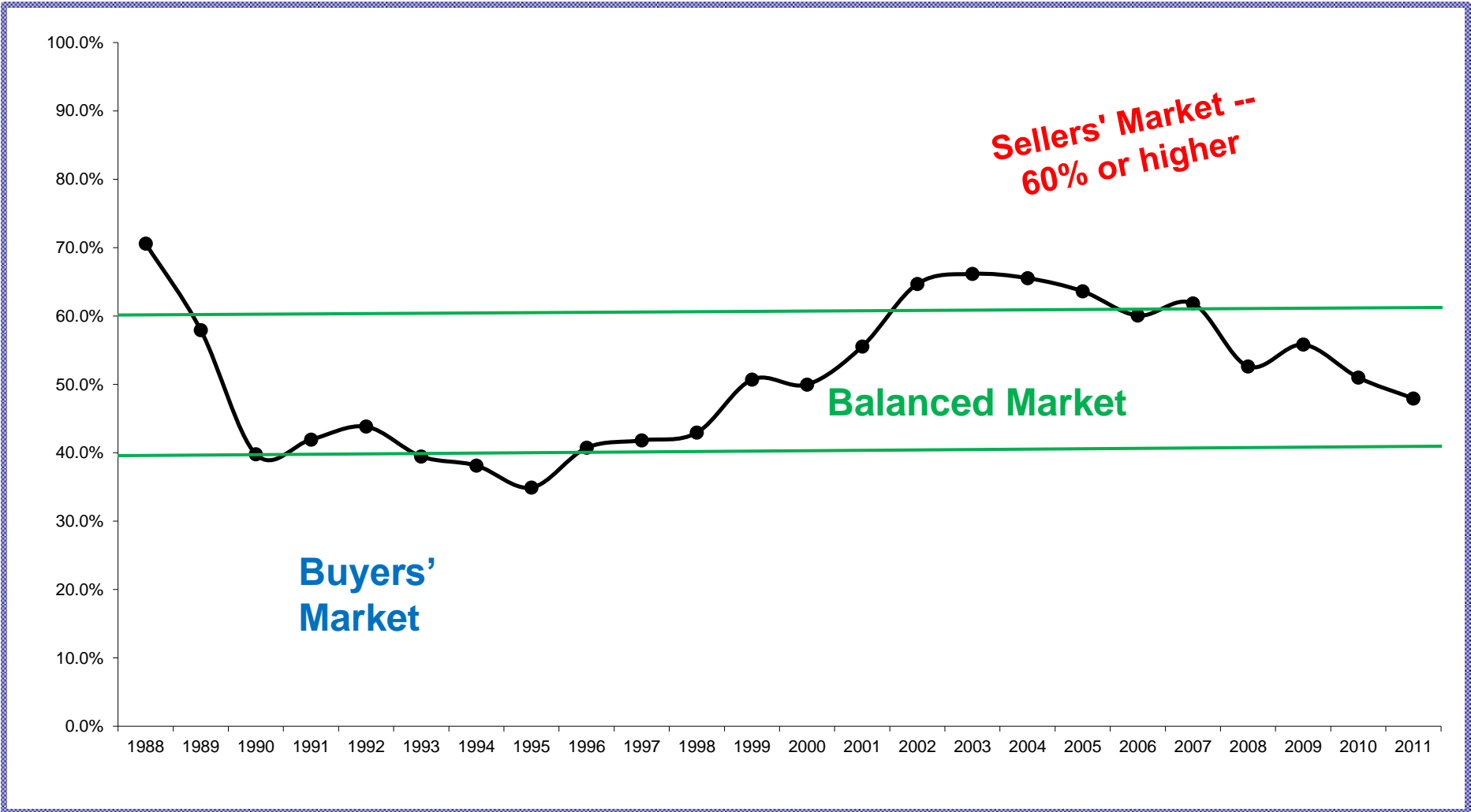


Months of Residential Inventory

With London & St. Thomas Association of Realtors' Jurisdiction

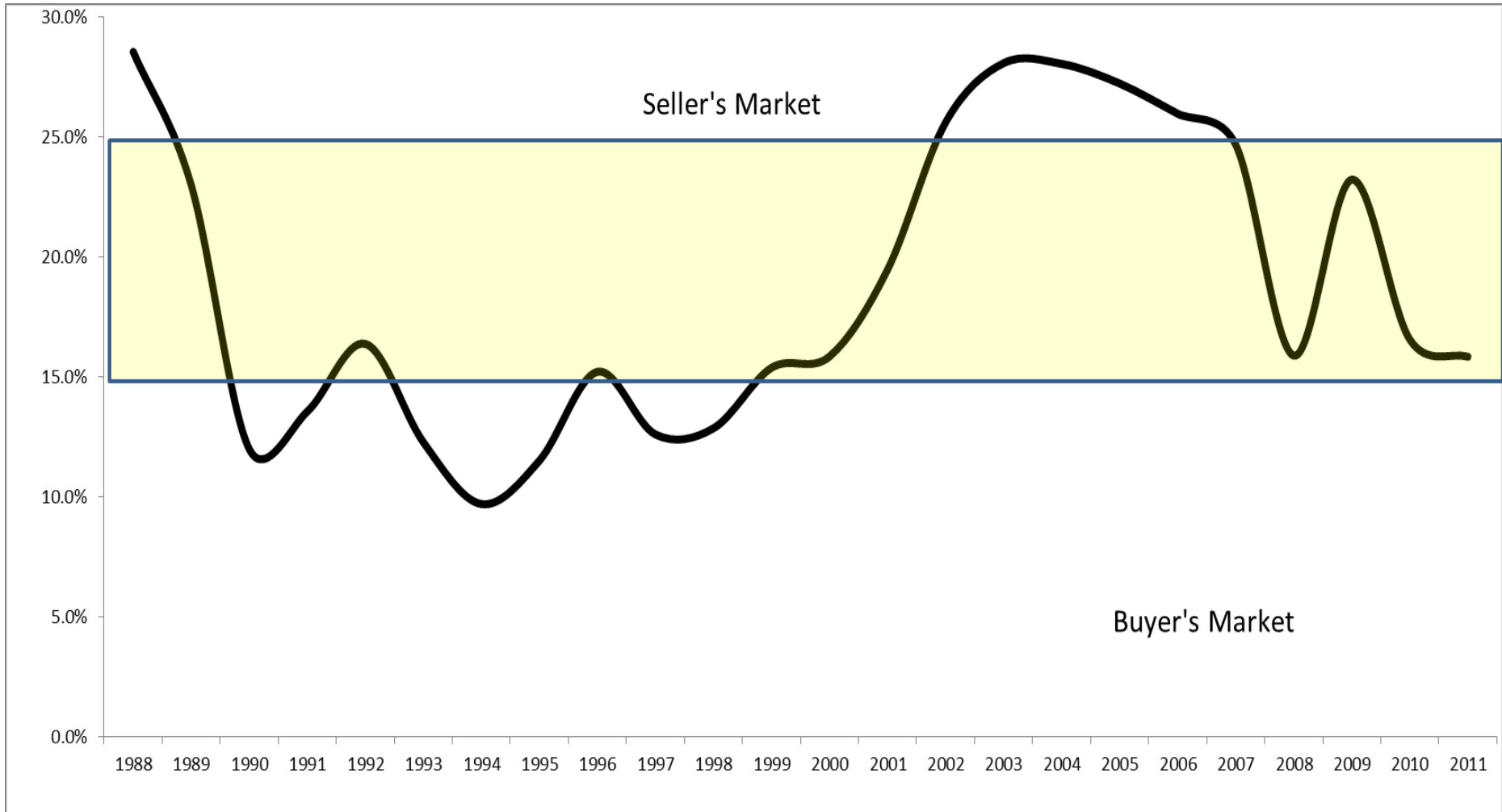


Sales to New Listings Ratio



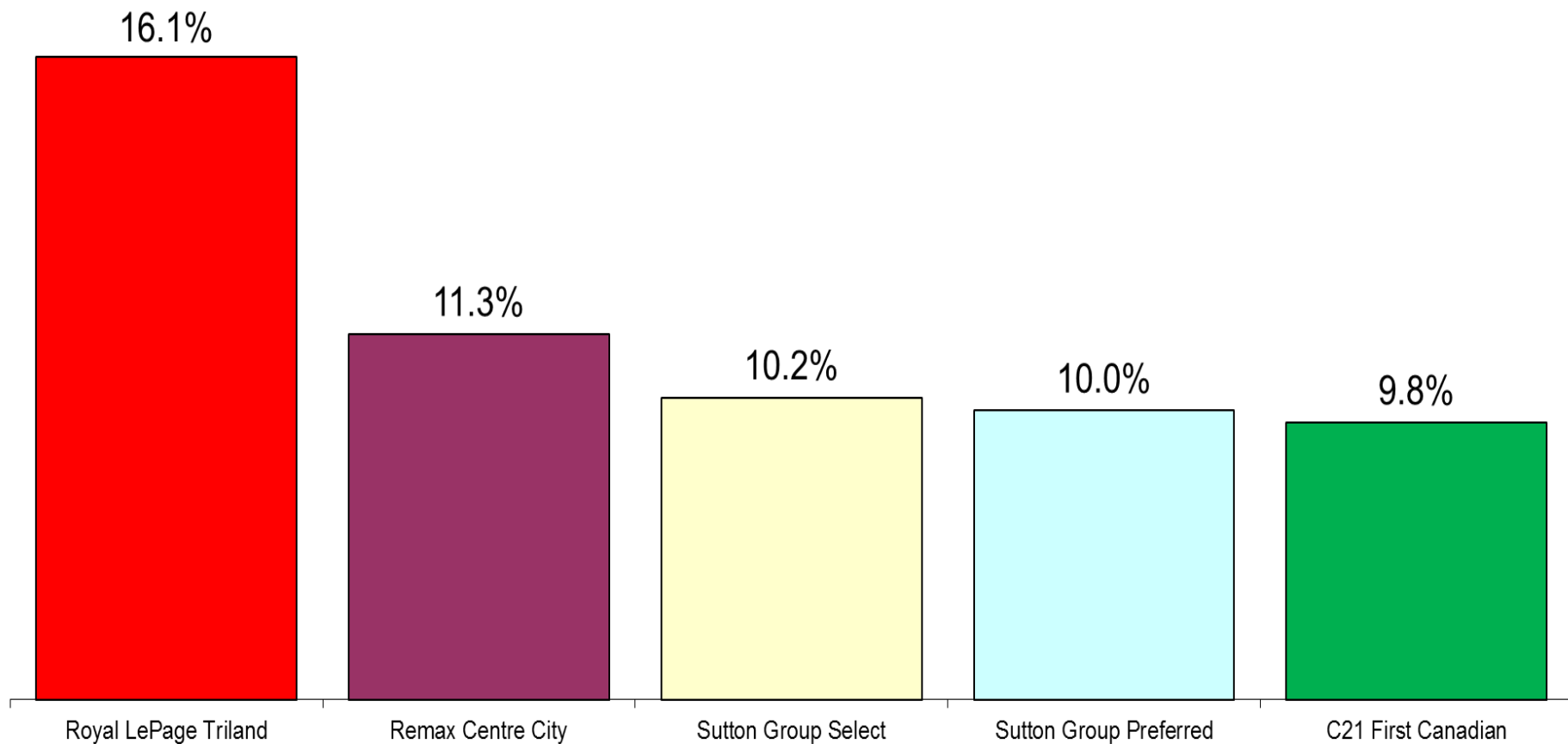
MLS Sales Greater London Area – London & St. Thomas Association of Realtors' Jurisdiction – YTD October 30

Sales to Active (Inventory) Listings Ratio



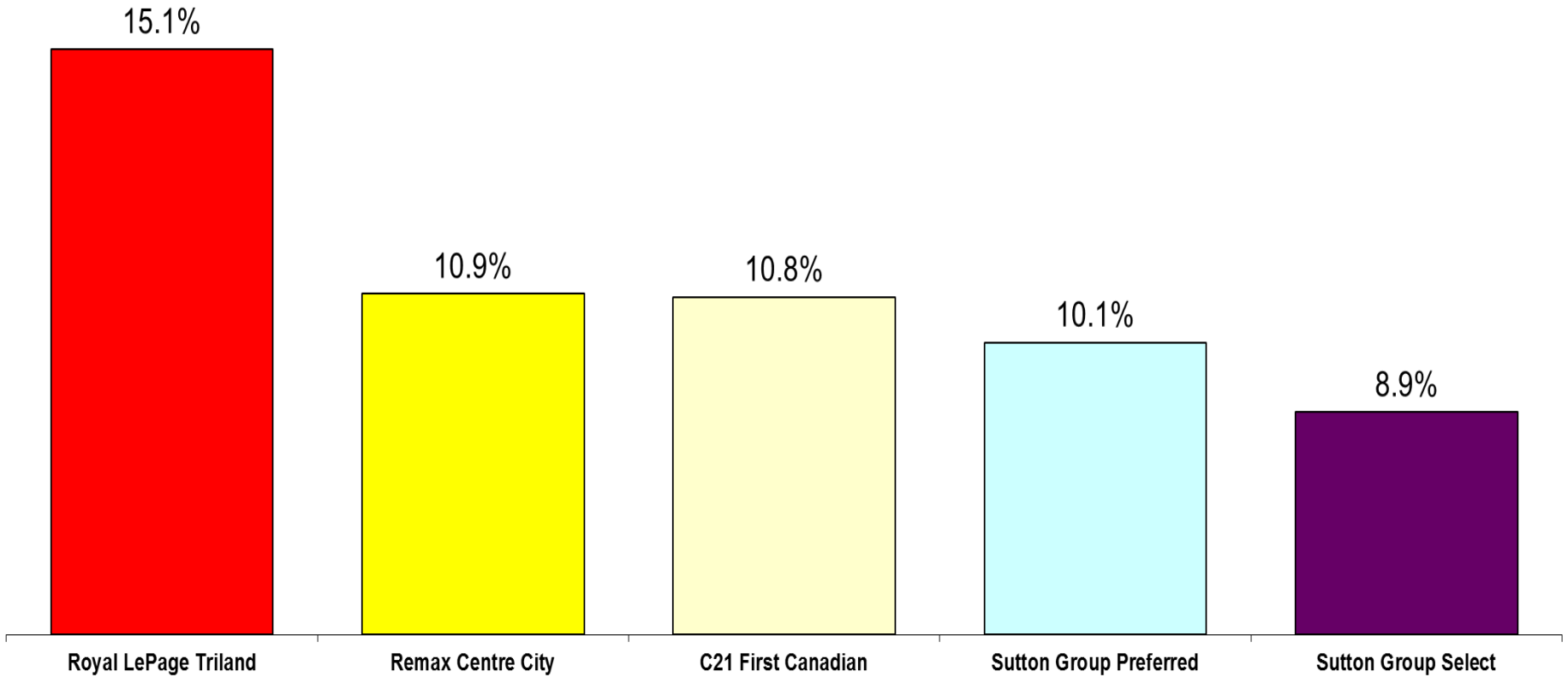
MLS Sales Greater London Area – London & St. Thomas Association of Realtors' Jurisdiction – at October 31

Dollar Volume Market Share



Transaction can mean either purchase or a sale. Where both buyer and seller are represented, two transactions are counted.
MLS Residential sales, London and St. Thomas Association of Realtors (LSTAR) – Jurisdiction Area YTD October 31, 2011

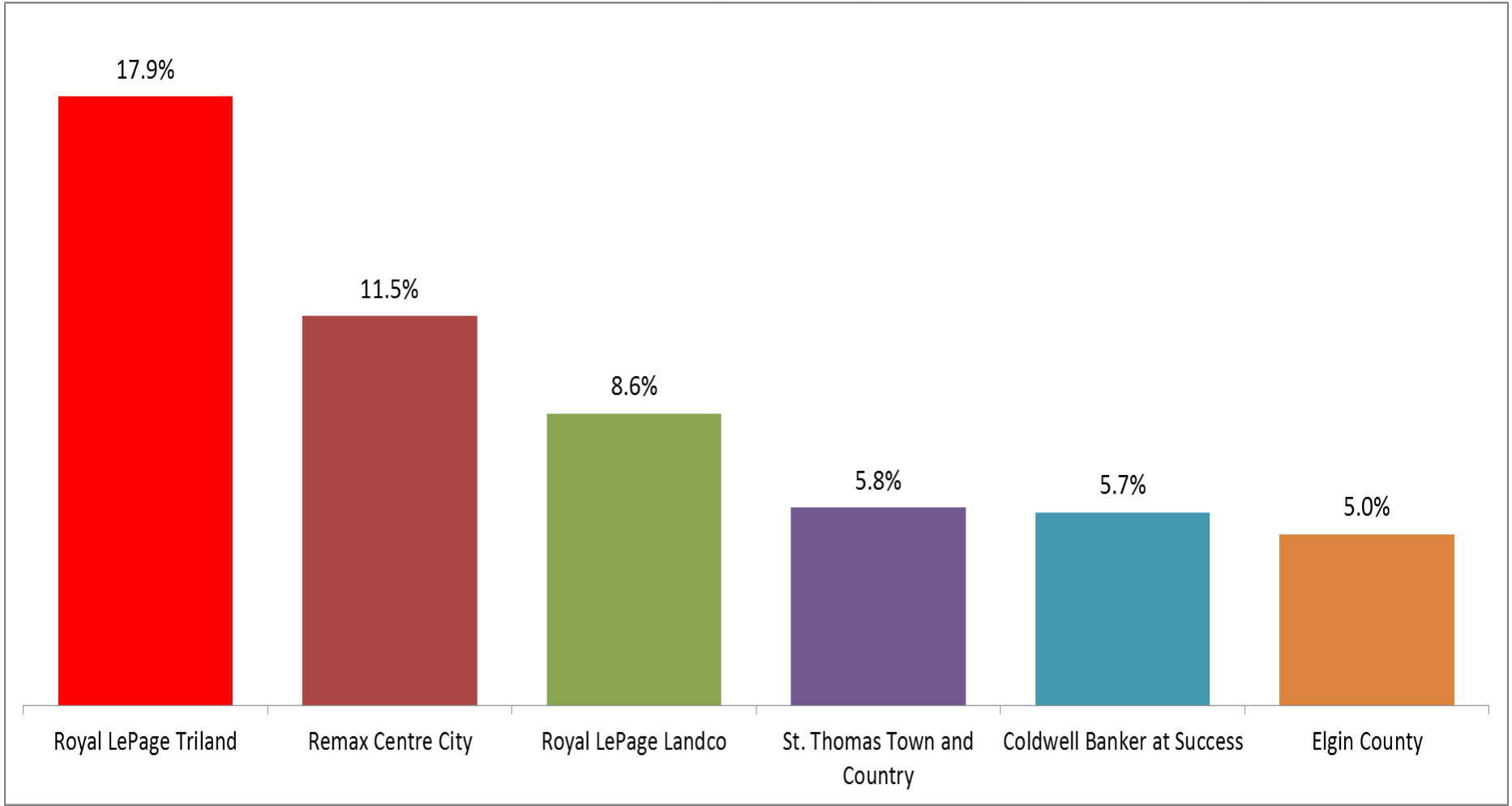
Market Share of Residential Listings





Market Share of Residential Listings

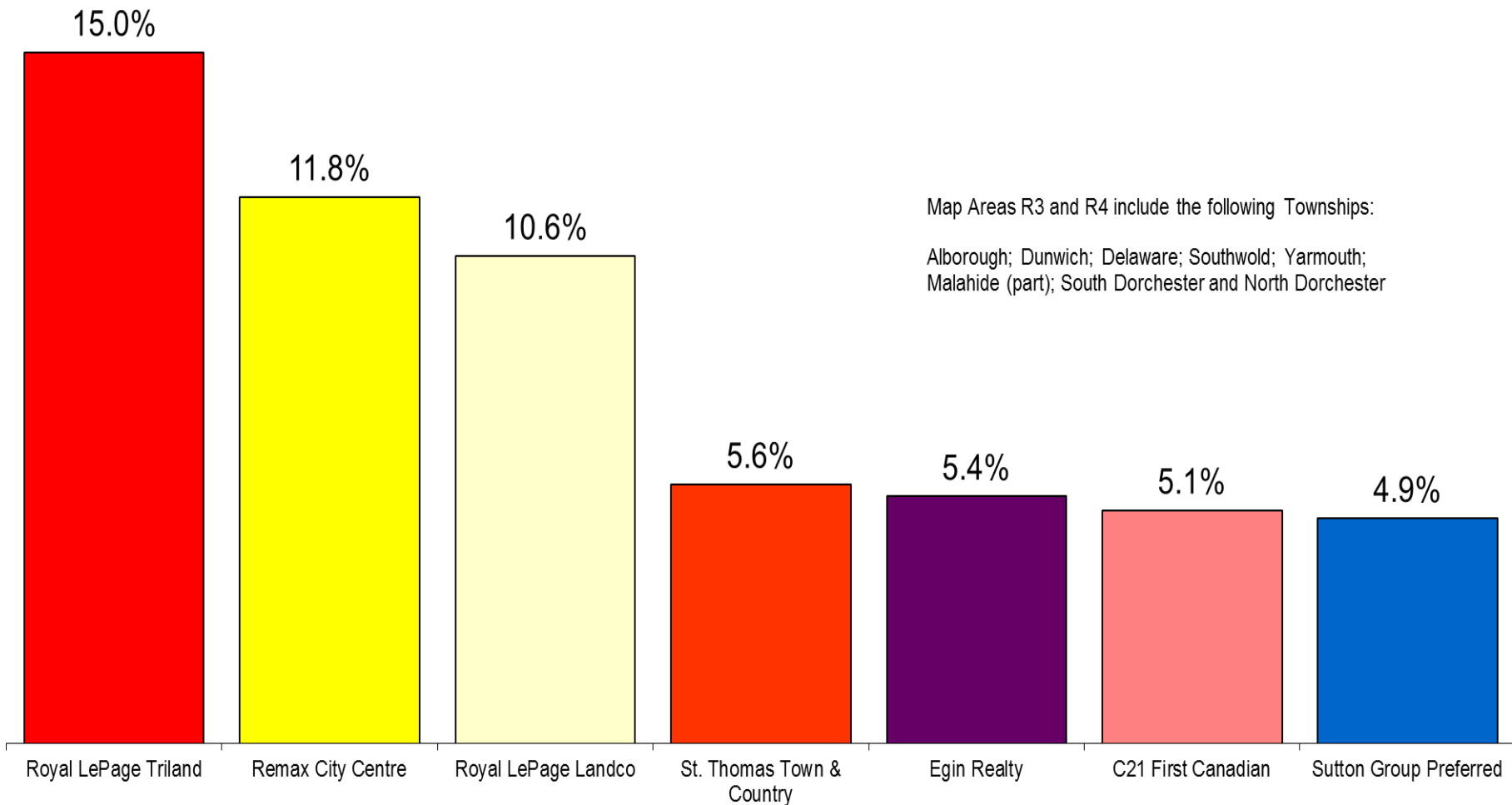
St. Thomas and Elgin County



MLS Sales – London & St. Thomas Association of Realtors' Jurisdiction – YTD October 31

St. Thomas and “Map Areas R3 and R4”

Dollar Volume of Residential Sales – Market Share
 YTD October 31, 2011



Map Areas R3 and R4 include the following Townships:
 Alborough; Dunwich; Delaware; Southwold; Yarmouth;
 Malahide (part); South Dorchester and North Dorchester

Compiled from data supplied by London & St. Thomas Association of Realtors

Royal Bank of Canada Prime Interest Rate

